

Exploding Treat Boxes



There is nothing as special as pretty wrapping and packaging especially a handmade box. I've given instructions for 'exploding' boxes, and also for those not so adventurous decorated flat pack favour boxes. An exploding box is so called because when you open the lid the sides fall down and 'explode', very safe no need to call the emergency services! I don't apologise for offering up another paper craft project this month as it is useful to know how to make and can be adapted through the year for other occasions. The crochet birds nest and knitted bird egg cosy fit inside perfectly and together make a lovely combination.

Materials:

- 12x12 (300gsm) construction weight card (2 sheets per basic exploding box), ready cut/scored versions available online
- 9x9cm white square flat pack favour boxes
- Patterned papers and matching embellishments
- Paper trimmer, score board, ball tool
- Scissors, bone folder, PVA glue
- *Teabag fold instructions PDF*

Instructions:

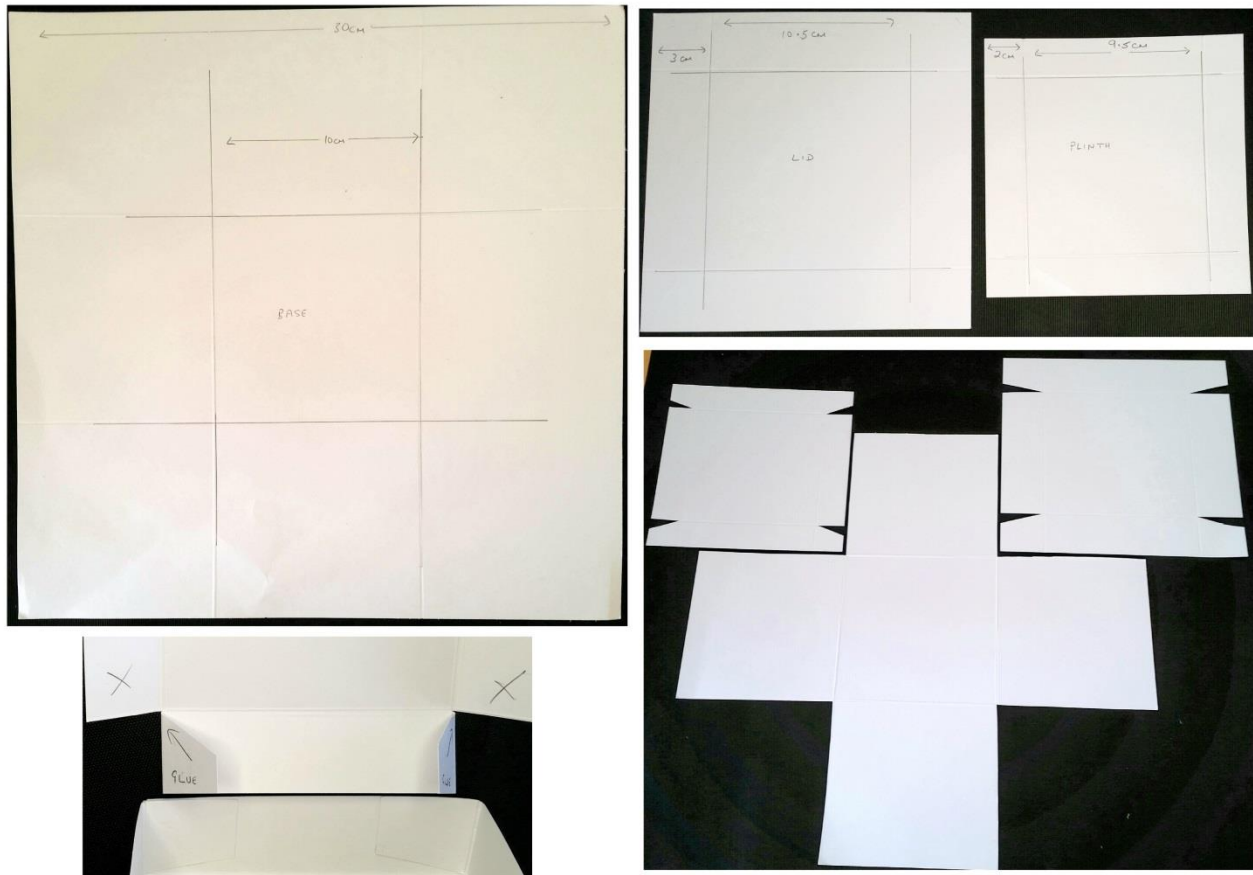
Trim 12x12 card to 30cm square using a paper trimmer, or mark measurements with pencil and ruler cutting away excess with scissors. Mark the sides at 10cm points; emboss lines between these across the page using a scoreboard, or with ruler and ball tool leaving a 3x3 grid effect.

Cut a 16.5cm square for lid, embossing 3cm fold lines for the sides; the plinth if using is from a 13.5cm square with 2cm sides. The plinth is intentionally left loose to hide additional surprises underneath (do let the recipient know).

Cut away the four corner squares from the base. Cut in notches for the lid and plinth as shown. Crease the embossed lines with a bone folder to stretch the fibres for easier crisper folding.

Cut 9.5cm square 'mats' from patterned paper for the panels of the base, four for outside, five for inside. Cut two 10cm 'mats' for the inside and outside lid, and two 9cm 'mats' for the plinth. Glue on while all pieces are flat.

Glue the notched ends to the inside lid/plinth sides and burnish down to adhere well. If there is patterned paper left over add strips to the sides of the lid if wanted.



The 10cm³ inside space is more than big enough to house a lovely gift. For Easter a small bag of chocolate eggs/sweets, a chocolate orange or the crochet nest and knitted egg cosy as shown in one of the samples. A mini cake, candle or other small gift for Mother's Day. Hide money or a gift card under the plinth as an additional surprise.

You could replace the patterned paper with family photographs, mementos and keepsakes to really personalise your gift. Once the gift is gone the box can be reused on another occasion.

For a double/triple layer exploding box (as I've done in one example) decrease each layer by 3cm incrementally. Measure a panel for what size 'mats' to cut taking 0.5cm off that measurement to fit. Decorate the layers with patterned papers while flat before gluing the central bottom squares on top of each other.

One layer exploding boxes with optional loose plinth.
Green version with teabag fold rosette decoration housing nest and bird egg cosy.



Triple layer exploding box using 30cm, 27cm, 24cm size 'bases'.
Inner layer has its own lid, another could be made for the middle.
The outer two layers explode first then the inner one when the lid is lifted.



Flower and paper vase exploding box.
Additional glued down 'lid' for the removable vase to sit in securely
or to add something different.





9x9cm bought in favour boxes, ready scored and box sides already glued together.

Fold out and crease all the scored lines using a bone folder to soften and stretch the card fibres to make easier for folding up. Cut twelve 8.5cm squares of patterned paper, six for inside (optional), six for outside. PVA glue the patterned squares to the inside and outside panels while it is flat, adding the squares to the inside/outside bottom last of all. Add decoration to the lid.



This size favour box was the perfect size to fit into an exploding box as you can see.

They have not been glued together. Great size for a cupcake or chocolate orange.

Best of all both boxes can be reused after the present inside has gone.



Gillian Cain, Bowes Belles WI, Tyne & Wear South Federation
<https://www.facebook.com/gillcrafts>