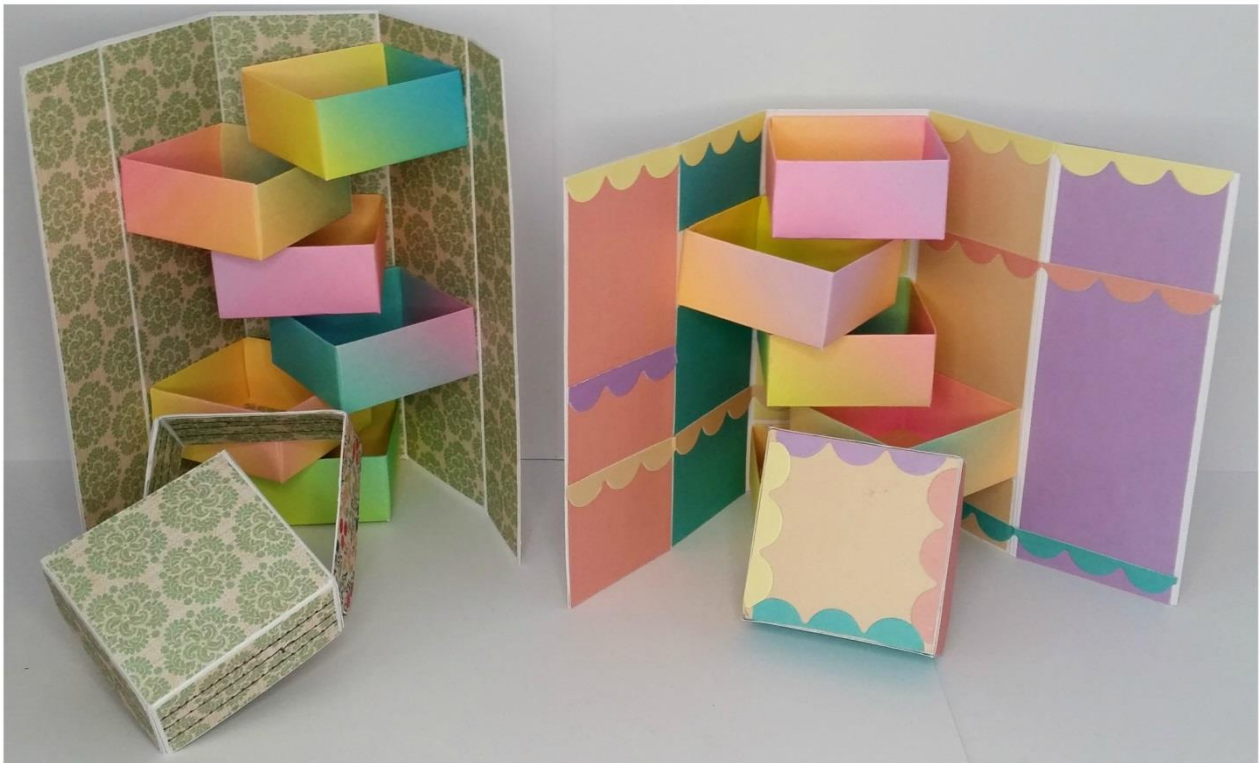


Jewellery Box Tower



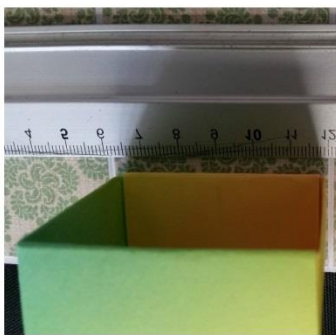
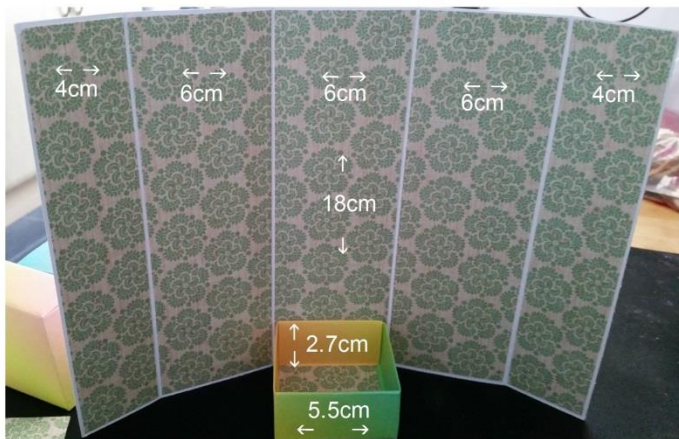
Another pairing to run alongside 'Jewellery Craft Part 2' is this fold out tower to use as jewellery storage and display, or whatever else you want to use it for. Made from construction weight card, pretty craft papers and kirigami boxes it can be made to match your décor/theme. A nice idea for craft markets as you can display items when opened and then simply fold away to store till next time. Accuracy in measuring/cutting is the key for a good snug fit and finish....*measure twice, cut once!*

Materials:

- 2 sheets A4 card 250-300gsm
- Craft paper – 6 sheets for the 6x6 boxes – 3 to 4 sheets 8x8/12x12/A4 papers to decorate
- Ruler, pencil, scissors
- Bone folder, score board (or use embossing tool and ruler), paper trimmer (or use scissors)
- PVA dries clear glue

Instructions:

The instructions are for the tower, top left on the main image, which is a good size to start with. This used 6 boxes from 6x6 papers (finished dimension 5.5cm wide, 2.7cm high). Measurements were calculated around them, adding 5mm to the panel width and just under 2cm to the height to factor in gaps between.



- Trim A4 card to 26x18cm.
- Score and emboss lines at 4cm, 10cm, 16cm and 22cm, creating five panels giving a crossed over gatefold style front. Fold and firmly crease score lines with a bone folder in both directions to create good movement and crisp edges.
- As I used white card I added panels of craft paper to decorate the inside and outside, 3.8x17.8cm for the end panels, 5.8x17.8cm for the centre ones. Glue down as shown above leaving a white border over the scored/embossed edges.
- Make sure you have sufficient matching papers to complete. Leftovers will be used to decorate the lid and belly band. You could use coloured/patterned card removing the need for craft paper.
- Glue the kirigami boxes to the inside as shown above starting with the bottom one first. Add a generous amount of PVA to one side of the box and press down till it holds, making sure it is level. Leave a minute or so for glue to set a little between adding boxes.
- Position the next box, I found it helpful using a ruler and drawing a short line where it should be glued, placing the bottom of the box on that line.
- After each box is added and glued, open/close up the tower to make sure it is opening freely without boxes catching on each other and they are still level before the glue fully sets.



- Make a lid from a 12.2cm square of card. Score at 3cm on the four sides, fold and crease well with a bone folder. Cut notches in as shown.
- While flat glue panels of craft paper to the top, 5.8x5.8cm for the centre, 2.8x5.8 for the sides.
- Glue in the notch cut corners and leave to set a little before adding craft paper panels (same size as before) to the inside.
- I've added a belly band for the bottom of the tower to keep it closed. Cut a long 3cm wide strip of card from the leftover A4 card. Score at 6.2cm intervals and fold to create the four sides, trim off excess leaving 2cm to glue together inside as shown above.
- Cover with strips of leftover craft papers inside and outside.
- Instead of a belly band you could make another lid to stand it in.



Above and below are other variations you could try. Just remember to plan and work out all measurements beforehand for the style/size of tower you want before cutting into card/paper. I've used 12x12, 8x8 and 6x6 paper kirigami boxes to make the different sizes. The larger they are and depending on how many boxes inside you will have to add overlaps to join together. For

larger versions you will need 12x12/A3 card. Patchwork your leftover scraps instead of cutting into a new 12x12 sheet as I have done for the lid of the black/gold box below.



Gillian Cain, Bowes Belles WI, Tyne & Wear South Federation

<https://www.facebook.com/gillcrafts>