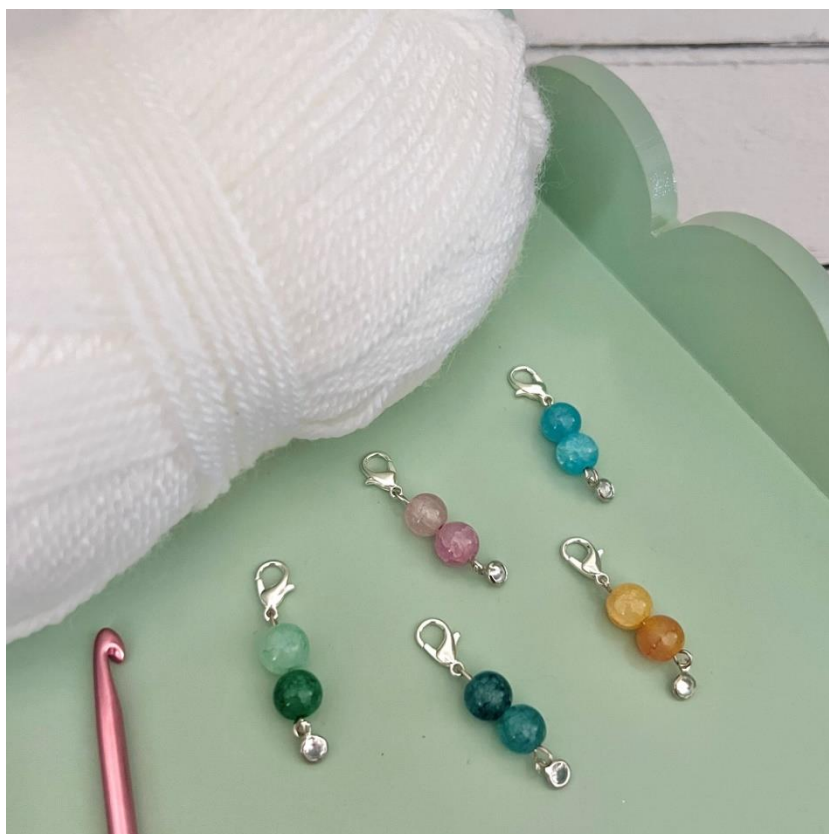


Stitch Markers



Skill level: Beginner

To make one stitch marker, you will need:

- 2 x 5mm glass beads
- Charm 3-5mm
- Eyepin 30mm
- Lobster clasp 12mm
- Round nosed jewellery pliers
- Cutting pliers
- Ruler

Tips and ideas

- The markers can be used for crochet or knitting.
- Add number beads for the markers to be used to count rows.
- Personalise the markers by adding initial beads.
- If you don't have a charm to add to the bottom, use a headpin instead of an eyepin.
- You could use up beads and charms from your craft stash.
- Create a set of stitch markers to gift to your family and friends.

To make:

1. Take the two beads and thread them onto the eyepin.



2. Ensure there is 10mm of the eyepin sticking out from the beads (the open end without the loop). You may need to use your cutting pliers to trim the pin.



- Using the round nosed pliers, carefully bend the straight end of the pin into a hook shape. Place the lobster clasp onto the hook.



- Use the round nosed pliers to fully close a loop, with the lobster clasp attached.



5. At the other end of the eyepin, use your pliers to slightly open the loop. Attach the loop of your charm and close the loop on the eyepin.

